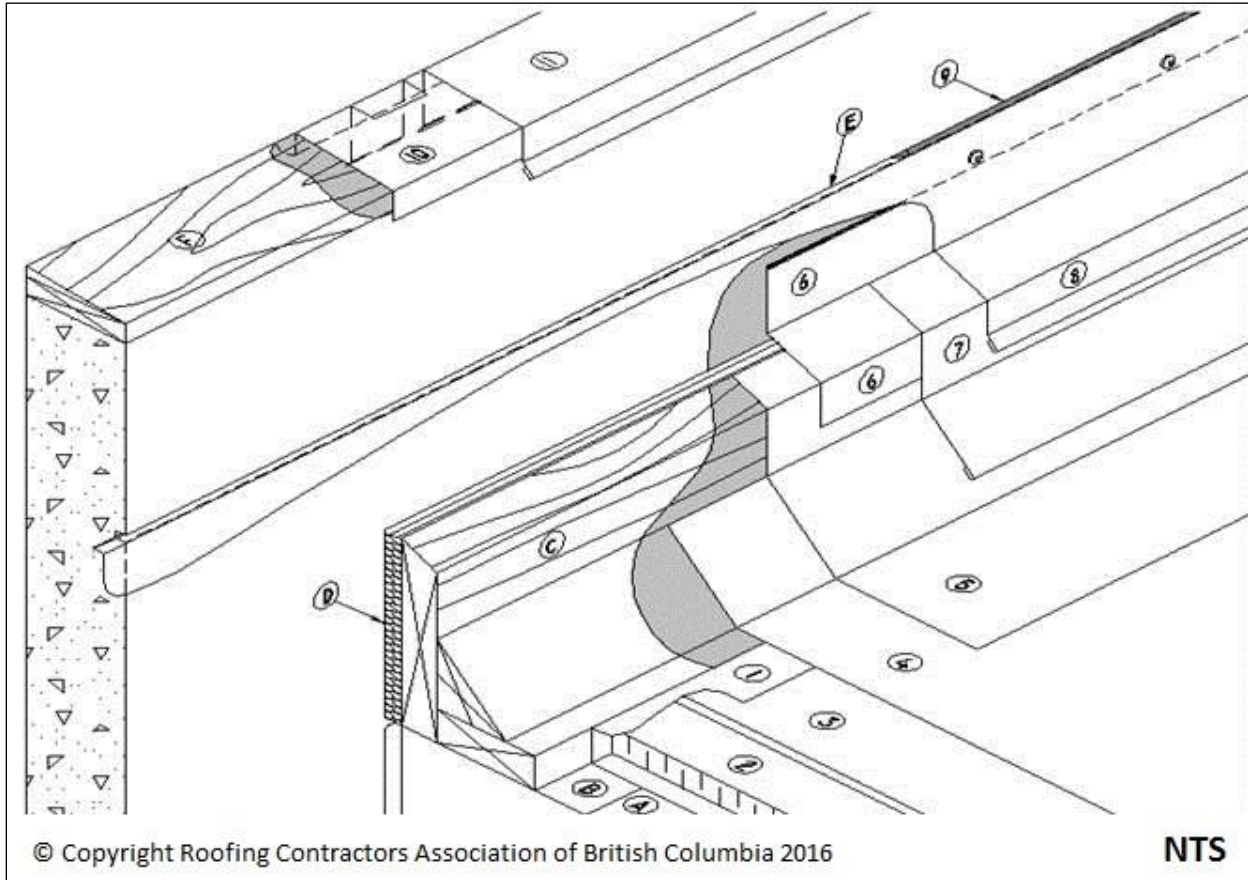


SBS Details: D1.7.4-2 Counter-flashings & Reglets (Deck – Unsupported)



Notice to reader: Drawing for illustration purposes only. Consult the RoofStar Guarantee Standards for more information.

1 WORK INCLUDED

(1) [Vapour Retarder](#)

The requirement for a vapour retarder is determined by the design authority. Optional terminations.

(2) [Insulation](#)

(3) [Insulation Overlay](#)

Where required.

(4) [Primary Membrane and Membrane Protection](#)

(5) [Membrane Flashing](#)

Mechanically fasten to top of wood blocking.

(6) [Membrane Counter-flashing](#)

Flashing sealed to wall with compatible mastic.

(7) [Metal Base Flashing](#)

Mechanically fasten to top of wood blocking (C). Optional on flexible membrane systems. Required on assemblies using gravel ballast filter mats.

(8) [Metal Counter-flashing](#)

Into reglet approximately 30 mm (1¼") and caulked.

(9) **Caulking**

(10) [Membrane Underlay](#)

Minimum self-adhered modified bitumen membrane.

(11) [Metal Cap Flashing](#)

Must overlap exterior wall finish. Fasten with continuous concealed clip-type fasteners or cladding screws evenly spaced between seams.

2 RELATED WORK BY OTHERS

(A) [Acceptable Deck](#)

(B) [Air/Vapour Seal](#)

Sealed to wall.

(C) [Wood Blocking](#)

Height to provide minimum 200 mm (8") above completed roof system, slope top edge.

(D) **Flexible Insulation**

(E) [Reglet](#)

(F) [Sloped Wood Blocking](#)